

MIDAS - Bond Opportunities B - Acc

Monthly summary report | as at 31 March 2018

Investment Objective

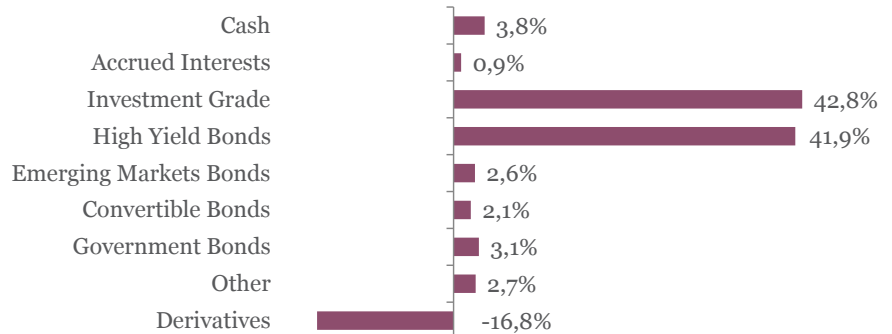
The fund seeks to achieve capital appreciation over the medium term by investing in a diversified portfolio of Euro-denominated fixed income securities (investment-grade corporate bonds, government bonds, high yield and emerging market debt as well as convertible bonds). The main focus is put on bottom-up selection. Interest rate as well as credit risks are managed actively.

Latest Update		Performance	1M	YTD	2017	2016	2015	3Y	5Y
NAV per share	130,05	Midas Bond Opp.	-0,47%	-0,88%	4,87%	4,11%	0,01%	4,45%	19,07%
2018 year-to-date return as at 31 March 2018	-0,88%								

Fund key facts

Inception date*	17 September 2010
ISIN code	LU0541880133
Asset class	Bonds in EUR
Total fund assets	€ 190 million
Base currency	EUR
Legal status	Luxembourg UCITS
Management Fee	0,75%
Custodian	Crédit Suisse Lux
Liquidity	Daily
Settlement Date	Trade Date + 2 Days

Asset Allocation

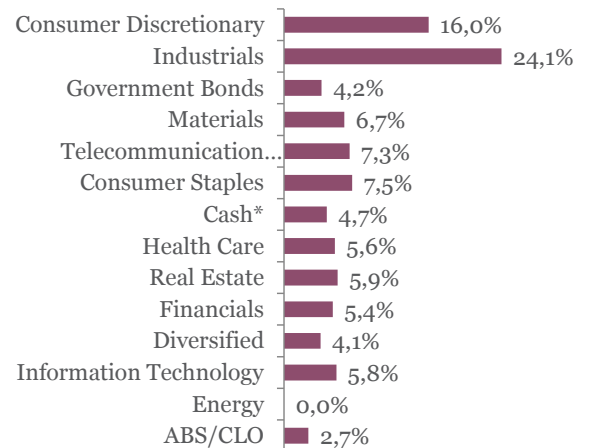


Top 10 bond holdings

	YTM	Rating	Weight
CELLNEX TELECOM : CLNXSM 2 7/8 04/1	2,4%	BBB-	2,7%
ITV PLC : ITVLN 2 1/8 09/21/22	0,9%	BBB-	2,2%
EUROFINS SCIEN : ERFFP 2 1/4 01/27/22	1,1%	NR	2,2%
BOLLORE SA : BOLFP 2 01/25/22	1,3%	NR	2,2%
UBISOFT ENTERTAI : UBIFP 1.289 01/30/:	1,1%	NR	2,1%
ILIAD : ILDFP 1 1/2 10/14/24	1,5%	NR	2,1%
BENI STABILI : BNSIM 1 5/8 10/17/24	1,6%	BBB-	2,1%
SIXT SE : SIXT 1 1/2 02/21/24	1,7%	NR	2,1%
AB INBEV SA/NV : ABIBB 1.15 01/22/27	1,3%	A-	2,1%
INGENICO GROUP : INGFP 1 5/8 09/13/24	1,9%	NR	2,1%

*Cash & Cash Equivalents

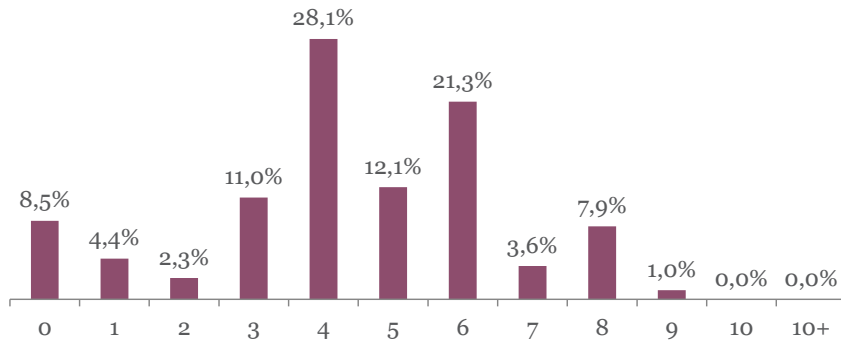
Sector breakdown



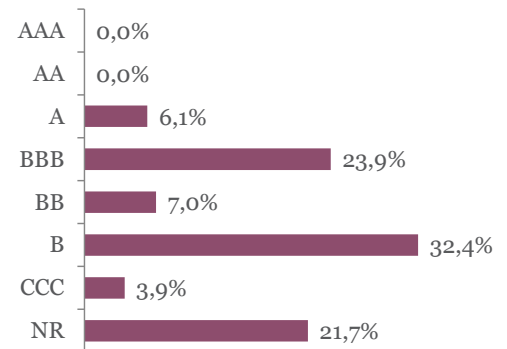
MIDAS - Bond Opportunities B - Acc

Monthly summary report | as at 31 March 2018

Duration breakdown



Rating breakdown



Top funds holdings

MM Convertible Europe	Convertible Bonds	2,1%
Swisscanto COCOs Bond Fund	High Yield Bonds	1,9%

Market Review

After a peak of volatility in February, the VIX index remained at high levels during the month of March, ranging between 15 and 25. Markets sold off sharply during the month hopping from trade tensions between US and China to Tech sell-off as excuses to pocket in profits and step up risk aversion gauges. While both trade tensions and the Tech sell-off are acknowledgeable fears, they should not be enough to disrupt a well engaged economic cycle. However, added to slowing down macroeconomic data, these risks worried investors, questioning the scenario of strong growth all over the places. Long Run inflation expectations, triggered by surprising hourly earnings in February, remained the backdrop of the interest rates evolution. With salary data reviewed to lower levels in March and inflation statistics in Europe below expectations for several countries during the month, the 10 Year EU Bund fell from 0.66% to 0.50%. In that context, the credit indices remain resilient with an iTraxx Europe widening of 2bp (considering +6bp for Roll-over) to 58bp and a Cross-Over index tightening of 10bp (considering +31bp for Roll-over) to 285bp.

Portfolio Performance

During the month, the fund lost 0.47%, essentially driven by the risk aversion movement experienced by the overall market, which translated into a widespread widening. To reflect our more prudent stance, we have continued to increase our high grade corporate bonds bucket (from 38% to 43%) and the duration has been increased (from 2.9 to 4.3).

Market Outlook

The most important thing in such late-cycle environment is reactivity, best expressed by high cash levels easily repositioned after such sell-offs to enjoy fast unfolding rallies. Current levels are closely watched as entry points to reduce again the duration of the fund.

This newsletter does not constitute an offer to sell or the solicitation of an offer to purchase any security or investment product. Information herein is believed to be reliable but Midas Wealth Management does not warrant its completeness or accuracy. The opinions expressed within are entirely those of Midas Wealth Management and do not constitute an offer of investment advice. Past performance will not necessarily be repeated and is not indicative of future results. The investments discussed may fluctuate in price or value and you may not get back the amount invested. The indices shown are presented only to allow for comparison of the Midas Wealth Management funds' performance to that of certain widely recognised indices. The volatility of the indices may be materially different from the individual performance attained by a specific fund or investor. In addition, the Midas Wealth Management fund holdings may differ significantly from the securities that comprise the indices shown. Investors cannot invest directly in an index. Performance figures reflect the reinvestment of all dividends and earnings, as well as investment management, administration and performance fees. A description of the specific fee structure and risks of investing for each Midas Wealth Management fund is contained in the fund's prospectus. No part of this document may be reproduced in any manner without the prior written permission of Midas Wealth Management.

* Performance has been calculated since inception on the 17th of September 2010 of Expert Investor Sicav Midas Bond Opportunities Fund which merged into Midas Sicav Bond Opportunities Fund on the 1st of August 2016.