

# MIDAS - Bond Opportunities B - Acc

Monthly summary report | as at 31 May 2018

## Investment Objective

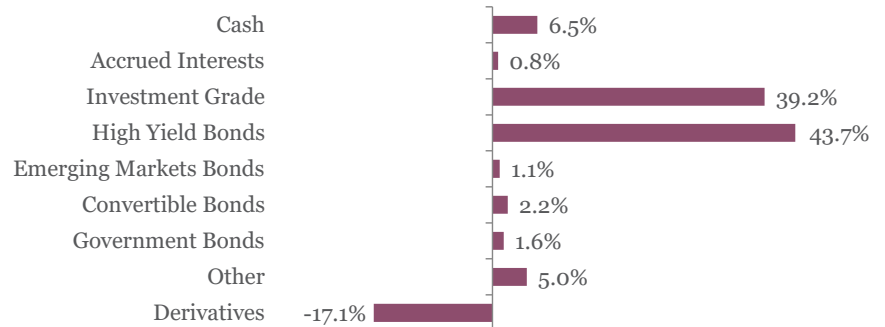
The fund seeks to achieve capital appreciation over the medium term by investing in a diversified portfolio of Euro-denominated fixed income securities (investment-grade corporate bonds, government bonds, high yield and emerging market debt as well as convertible bonds). The main focus is put on bottom-up selection. Interest rate as well as credit risks are managed actively.

Latest Update		Performance	1M	YTD	2017	2016	2015	3Y	5Y
NAV per share	129.05	Midas Bond Opp.	-1.12%	-1.64%	4.87%	4.11%	0.01%	3.77%	16.17%
2018 year-to-date return as at 31 May 2018	-1.64%								

## Fund key facts

Inception date*	17 September 2010
ISIN code	LU0541880133
Asset class	Bonds in EUR
Total fund assets	€ 185 million
Base currency	EUR
Legal status	Luxembourg UCITS
Management Fee	0.75%
Custodian	Crédit Suisse Lux
Liquidity	Daily
Settlement Date	Trade Date + 2 Days

## Asset Allocation

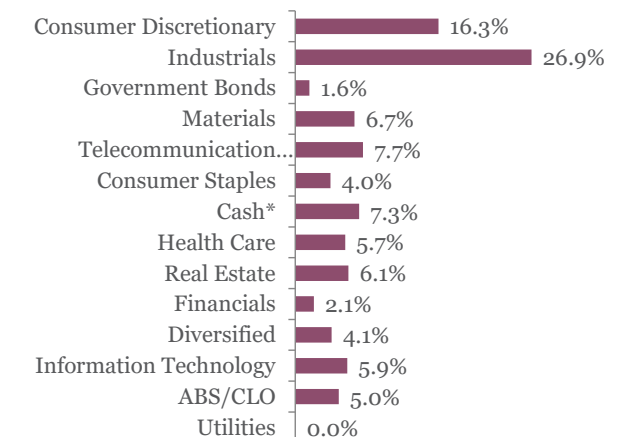


## Top 10 bond holdings

	YTM	Rating	Weight
CELLNEX TELECOM : CLNXSM 2 7/8 04/1	2.9%	BBB-	2.7%
EUROFINS SCIEN : ERFFP 2 1/4 01/27/22	1.2%	NR	2.2%
BENI STABILI : BNSIM 1 5/8 10/17/24	1.5%	BBB	2.2%
UBISOFT ENTERTAI : UBIFP 1.289 01/30/:	1.2%	NR	2.2%
BOLLORE SA : BOLFP 2 01/25/22	1.9%	NR	2.2%
SIXT SE : SIXT 1 1/2 02/21/24	1.6%	NR	2.1%
INGENICO GROUP : INGFP 1 5/8 09/13/24	1.8%	NR	2.1%
ILIAD : ILDFP 1 1/2 10/14/24	2.2%	NR	2.1%
GLENCORE FINANCE : GLENLN 1 7/8 09/:	1.2%	BBB+	1.7%
PRYSMIAN SPA : PRYIM 2 1/2 04/11/22	1.6%	NR	1.7%

\*Cash & Cash Equivalents

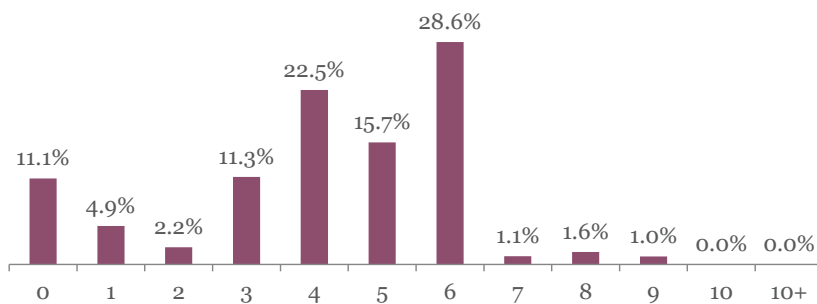
## Sector breakdown



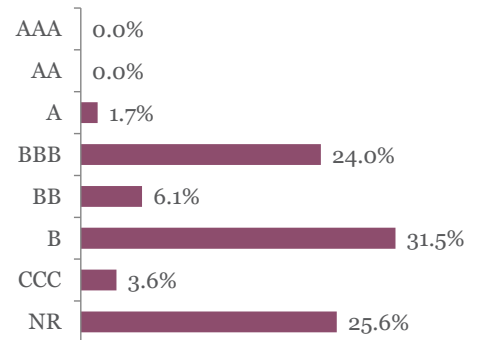
# MIDAS - Bond Opportunities B - Acc

Monthly summary report | as at 31 May 2018

## Duration breakdown



## Rating breakdown



## Top funds holdings

MM Convertible Europe	Convertible Bonds	2.2%
Swisscanto COCOs Bond Fund	High Yield Bonds	1.9%

## Market Review

May started on the same footing as April, as the soft patch in economic momentum seemed to dissipate, with developed countries equity markets gaining as much as +2,5/3% in the first trading sessions of May. Yet, by mid-May, three important metrics (Oil prices, the dollar, and US long-term interest rates) vigorously reached threshold levels that exhibit the potential to endanger some economic zones, the emerging countries most notably. This was also outbid by a return of political risks in some Emerging countries (Venezuela, Saudi politics, and Iran) and Europe, with fears of an “Italeave” roaring back with vengeance on the back of the Italian political scene demise.

The risk-off mood translated into higher prices for safe haven assets, such as the German Bund which saw its yield fall from 0.56% to 0.34% while on the other side of the spectrum, peripheral debt suffered (Italian BTP 10-year rates increased from 1.8% to 2.8%). On the credit side, the iTraxx European Main index widened by 15bp to 69.2bp and the Cross-Over index tightened by 34bp to 305bp.

## Portfolio Performance

During the month, the Fund abandoned 1.12% in difficult High Yield market conditions. We increased the duration to a level as high as 4.2 in order to be better positioned during the rally of the 10-Year EU Bund. The small portion held in peripheral government bonds have been turned in cash and we slightly and opportunely reinforced some names in the the corporate High Yield segment at the end of the month.

## Market Outlook

We see this recent rout in financial markets prices as transitory and remain at ease with our positive and constructive view on risky asset classes into the second part of the year. While political risks should never be underestimated, the global economy remain healthy and the markets should be able to ride out this month's ructions more ably than they had during 2011/2012.

This newsletter does not constitute an offer to sell or the solicitation of an offer to purchase any security or investment product. Information herein is believed to be reliable but Midas Wealth Management does not warrant its completeness or accuracy. The opinions expressed within are entirely those of Midas Wealth Management and do not constitute an offer of investment advice. Past performance will not necessarily be repeated and is not indicative of future results. The investments discussed may fluctuate in price or value and you may not get back the amount invested. The indices shown are presented only to allow for comparison of the Midas Wealth Management funds' performance to that of certain widely recognised indices. The volatility of the indices may be materially different from the individual performance attained by a specific fund or investor. In addition, the Midas Wealth Management fund holdings may differ significantly from the securities that comprise the indices shown. Investors cannot invest directly in an index. Performance figures reflect the reinvestment of all dividends and earnings, as well as investment management, administration and performance fees. A description of the specific fee structure and risks of investing for each Midas Wealth Management fund is contained in the fund's prospectus. No part of this document may be reproduced in any manner without the prior written permission of Midas Wealth Management.

\* Performance has been calculated since inception on the 17th of September 2010 of Expert Investor Sicav Midas Bond Opportunities Fund which merged into Midas Sicav Bond Opportunities Fund on the 1st of August 2016.