

MIDAS - Bond Opportunities B - Acc

Monthly summary report | as at 31 May 2019



Investment Objective

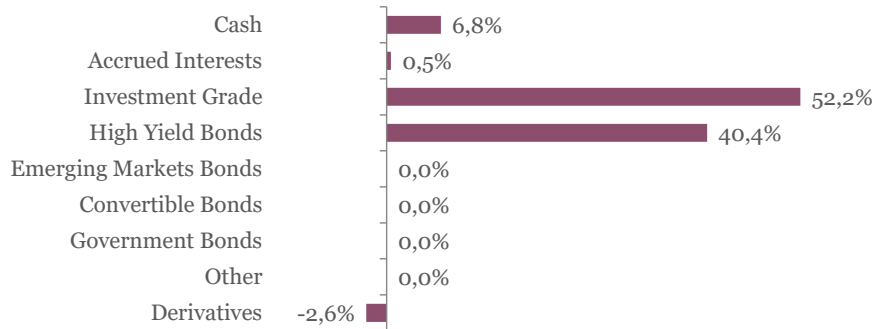
The fund seeks to achieve capital appreciation over the medium term by investing in a diversified portfolio of Euro-denominated fixed income securities (investment-grade corporate bonds, government bonds, high yield and emerging market debt as well as convertible bonds). The main focus is put on bottom-up selection. Interest rate as well as credit risks are managed actively.

Latest Update		Performance		1M	YTD	2018	2017	2016	3Y	5Y
NAV per share	128,10	Bond Opportunities B	-0,80%	2,65%	-4,89%	4,87%	4,11%	5,61%	6,02%	
2019 year-to-date return as at 31/05/2019	2,65%									

Fund key facts

Inception date	17 September 2010
ISIN code	LU0541880133
Asset class	Bonds in EUR
Total fund assets	€ 100 million
Base currency	EUR
Legal status	Luxembourg UCITS
Management Fee	0,75%
Custodian	Crédit Suisse Lux
Liquidity	Daily
Settlement Date	Trade Date + 2 Days

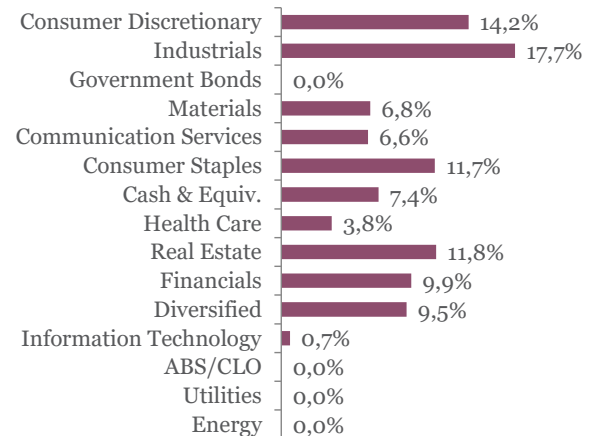
Asset Allocation



Top 10 bond holdings

	YTM	Rating	Weight
BANQ FED CRD MUT : BFCM 1 1/4 01/14/2	0,3%	A	2,1%
WELLS FARGO CO : WFC 1 3/8 10/26/26	0,8%	A-	2,1%
ALIMEN COUCHE : ATDBCN 1 7/8 05/06/2	1,3%	BBB	2,1%
BNP PARIBAS : BNP 1 1/2 11/17/25	0,9%	A-	2,1%
GLENORE FINANCE : GLENLN 1 7/8 09/1	1,0%	BBB+	2,1%
VILMORIN ET COMP : RINFP 2 3/8 05/26/	0,5%	NR	2,1%
ARCHER-DANIELS : ADM 1 09/12/25	0,5%	A	2,1%
EUROFINS SCIEN : ERFFP 2 1/4 01/27/22	1,1%	NR	2,1%
AT&T INC : T 1.05 09/05/23	0,4%	BBB	2,1%
SEB SA : SKFP 1 1/2 05/31/24	1,0%	NR	2,1%

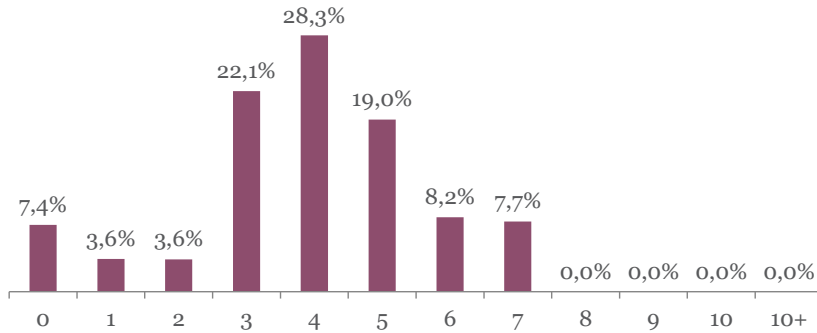
Sector breakdown



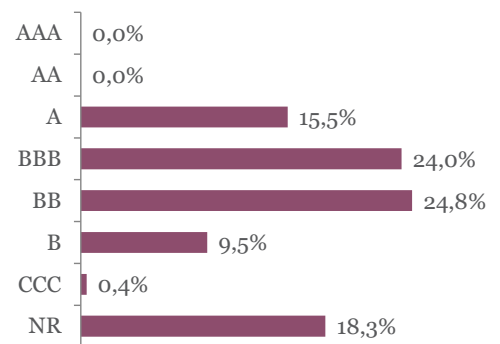
MIDAS - Bond Opportunities B - Acc

Monthly summary report | as at 31 May 2019

Duration breakdown



Rating breakdown



Top funds holdings

ISHARES EURO HY	High Yield Bonds	9,5%
-----------------	------------------	------

Market Review

Government bond yields tumbled in May as Trade War intensified and Global economy lost momentum. The German 10Y yield dropped 22 bps to a record low of -0.20%, and the curve flattened (2-30 -15 bps). The move was initiated by the US Treasury curve which underwent a sharp parallel shift lower (US 10Y -38 bps to 2.12%). Markets have speculated on a Fed rate cut by the end of the year. The Italian 10Y spread to Germany widened to year-high 287 bps (+33 bps) after the Italian government and the European Commission confronted over mounting budget deficit and potential penalty.

Corporate bonds were mixed in May, as spreads widened in the wake of the equity selloff (Euro Stoxx 50 -5.5%). Investment Grade bonds were stable (Bloomberg Barclays EUR Corporates IG +0.02%) thanks to the yield effect which offset the spread widening (+19 bps). However, High Yield bonds decreased (Bloomberg Barclays EUR Corporates HY -1.35%) due to the spread widening (+56 bps), and single B underperformed.

Portfolio Performance

The fund lost 0.80% in May. IG bonds were quite resilient and some names outperformed (Gecina, Sixt, Seb, IMCD). However, HY bonds contributed negatively, especially single B (Atalian, WFS, CMA CGM, Almagora, Picard).

Market Outlook

We maintained a balanced approach with a mix of IG and HY corporate bonds. In the meantime, we implemented arbitrages to take of advantage of relative value. In IG, we switched Becton and Fresenius for Alimentation Couche-Tard. In, HY, we reduced positions in Stada and Selecta that recently outperformed. Moreover, as the German government curve flattened, we moved short position in German 2Y towards 10Y one.

This newsletter does not constitute an offer to sell or the solicitation of an offer to purchase any security or investment product. Information herein is believed to be reliable but Midas Wealth Management does not warrant its completeness or accuracy. The opinions expressed within are entirely those of Midas Wealth Management and do not constitute an offer of investment advice. Past performance will not necessarily be repeated and is not indicative of future results. The investments discussed may fluctuate in price or value and you may not get back the amount invested. The indices shown are presented only to allow for comparison of the Midas Wealth Management funds' performance to that of certain widely recognised indices. The volatility of the indices may be materially different from the individual performance attained by a specific fund or investor. In addition, the Midas Wealth Management fund holdings may differ significantly from the securities that comprise the indices shown. Investors cannot invest directly in an index. Performance figures reflect the reinvestment of all dividends and earnings, as well as investment management, administration and performance fees. A description of the specific fee structure and risks of investing for each Midas Wealth Management fund is contained in the fund's prospectus. No part of this document may be reproduced in any manner without the prior written permission of Midas Wealth Management.

*Performance has been calculated since inception on the 17th of September 2010 of Expert Investor Sicav Midas Bond Opportunities Fund which merged into Midas Sicav Bond Opportunities Fund on the 1st of August 2016.