

MIDAS - Bond Opportunities I - Acc

Monthly summary report | as at 30 June 2018

Investment Objective

The fund seeks to achieve capital appreciation over the medium term by investing in a diversified portfolio of Euro-denominated fixed income securities (investment-grade corporate bonds, government bonds, high yield and emerging market debt as well as convertible bonds). The main focus is put on bottom-up selection. Interest rate as well as credit risks are managed actively.

Latest Update

NAV per share	103,34
2018 year-to-date return as at 30 June 2018	-2,07%

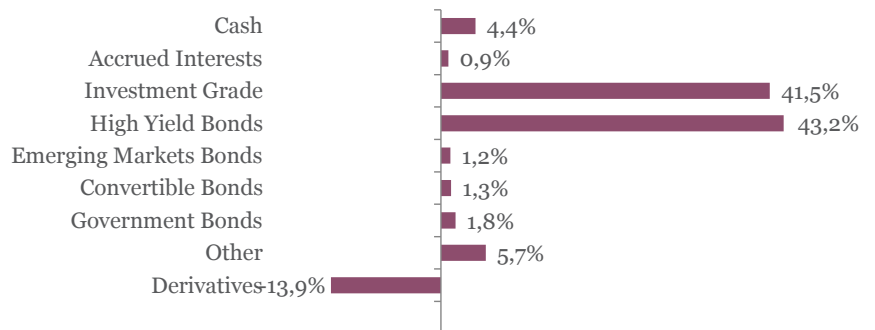
Performance

	1M	3M	YTD	1Y	2017	SI
Midas Bond Opp.	-0,55%	-1,26%	-2,07%	-0,56%	5,07%	3,34%

Fund key facts

Inception date	31 August 2016
ISIN code	LU1452411033
Asset class	Bonds in EUR
Total fund assets	€ 162 million
Base currency	EUR
Legal status	Luxembourg UCITS
Management Fee	0,50%
Custodian	Crédit Suisse Lux
Liquidity	Daily
Settlement Date	Trade Date + 2 Days

Asset Allocation

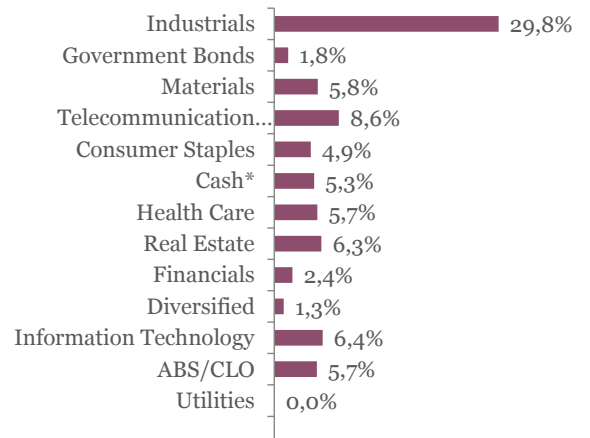


Top 10 bond holdings

	YTM	Rating	Weight
CELLNEX TELECOM : CLNXSM 2 7/8 04/1	2,6%	BBB-	3,1%
SIXT SE : SIXT 1 1/2 02/21/24	1,3%	NR	2,5%
BOLLORE SA : BOLFP 2 01/25/22	1,8%	NR	2,5%
UBISOFT ENTERTAI : UBIFP 1.289 01/30/:	1,2%	NR	2,5%
INGENICO GROUP : INGFP 1 5/8 09/13/24	1,8%	NR	2,4%
ILIAD : ILDFP 1 1/2 10/14/24	2,1%	NR	2,4%
EUROFINS SCIEN : ERFFP 2 1/4 01/27/22	1,3%	NR	1,9%
GLENCORE FINANCE : GLENLN 1 7/8 09/:	1,4%	BBB+	1,9%
JUBIL 2014-11X DR : JUBIL 2014-11X DR	1,6%	BBB	1,9%
PRYSMIAN SPA : PRYIM 2 1/2 04/11/22	2,1%	NR	1,9%

¹Cash & Cash Equivalents

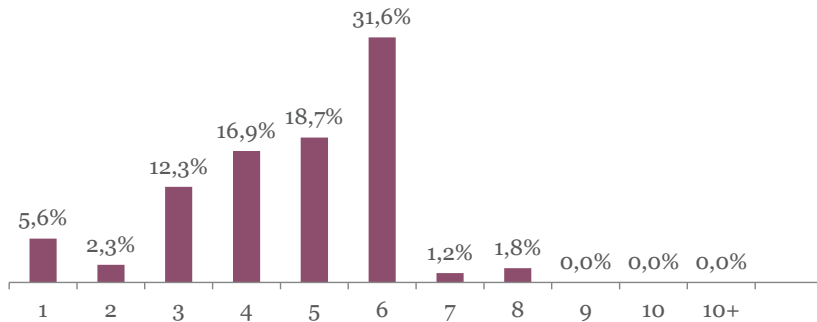
Sector breakdown



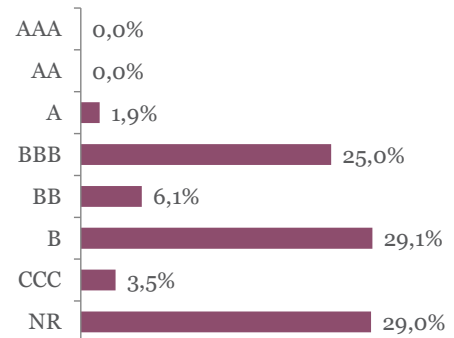
MIDAS - Bond Opportunities I - Acc

Monthly summary report | as at 30 June 2018

Duration breakdown



Rating breakdown



Top funds holdings

MM Convertible Europe	Convertible Bonds	1,3%
-----------------------	-------------------	------

Market Review

While H1 is now officially closed, time for a lookback is due. Global analysis of the performance of financial assets over the first part of the year delivers a lacklustre message where almost all asset classes underperformed cash returns and give back some - if not all - of 2016 & 2017 spectacular results.

June did not escape this reality. Despite a good start, it ended up with a difficult investment environment as fears about trade wars resurged. The expected move towards a less accommodative monetary policy stance by the Federal Reserve that hiked rates by 0,25% also pressured asset prices. This is commanded by a buoyant job market that could reinforce inflationary pressures in the system. It reduces the support of Central Banks around the world, which operated hawkish moves over last month with the Fed 5th rate hike and the ECB tapering communication.

In this context, the 10 Year US Treasury yield ended June at the exact same level it started it, at 2,86%, while the 10 Year German Bund yield decreased by 4 additional basis points to terminate the month at 0,30%. On the credit side, the iTraxx indices (CDS portfolios) widened by +4bp to 73bp on the European Main index and +25bp to 320bp on the Cross-Over index.

Portfolio Performance

During the month, the fund lost 0,55%. We maintained the duration at a level close to 4 in order to maintain our hedge against a tightening in the 10-Year German Bund rate. We lowered the more volatile part of our risky exposure, selling half our convertible bonds investments (via MM Convertible bond fund) and selling the contingent convertible bonds (via the SwissCanto CoCo's bond fund).

Market Outlook

On the front of US protectionism, in some more electoral moves towards Mid Term elections, the US president could once again be shaking things upside down by engaging further down into trade wars. This would result in uncertain times for financial markets in the tune of this late June episode. We continue to be prudent and favour investment grade rather than speculative grade, and short defensive names versus cyclical bonds.

This newsletter does not constitute an offer to sell or the solicitation of an offer to purchase any security or investment product. Information herein is believed to be reliable but Midas Wealth Management does not warrant its completeness or accuracy. The opinions expressed within are entirely those of Midas Wealth Management and do not constitute an offer of investment advice. Past performance will not necessarily be repeated and is not indicative of future results. The investments discussed may fluctuate in price or value and you may not get back the amount invested. The indices shown are presented only to allow for comparison of the Midas Wealth Management funds' performance to that of certain widely recognised indices. The volatility of the indices may be materially different from the individual performance attained by a specific fund or investor. In addition, the Midas Wealth Management fund holdings may differ significantly from the securities that comprise the indices shown. Investors cannot invest directly in an index. Performance figures reflect the reinvestment of all dividends and earnings, as well as investment management, administration and performance fees. A description of the specific fee structure and risks of investing for each Midas Wealth Management fund is contained in the fund's prospectus. No part of this document may be reproduced in any manner without the prior written permission of Midas Wealth Management.