

MIDAS - Bond Opportunities I - Acc

Monthly summary report | as at 31 July 2018

Investment Objective

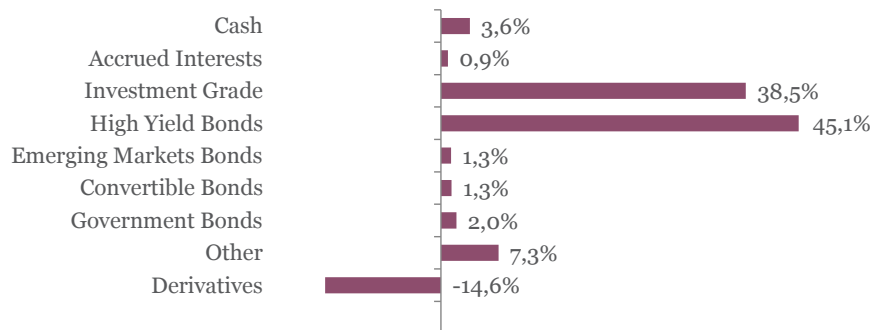
The fund seeks to achieve capital appreciation over the medium term by investing in a diversified portfolio of Euro-denominated fixed income securities (investment-grade corporate bonds, government bonds, high yield and emerging market debt as well as convertible bonds). The main focus is put on bottom-up selection. Interest rate as well as credit risks are managed actively.

Latest Update		Performance	1M	3M	YTD	1Y	2017	SI
NAV per share	104,54	Midas Bond Opp.	1,16%	-0,49%	-0,93%	-0,28%	5,07%	4,54%
2018 year-to-date return as at 31 July 2018	-0,93%							

Fund key facts

Inception date	31 August 2016
ISIN code	LU1452411033
Asset class	Bonds in EUR
Total fund assets	€ 154 million
Base currency	EUR
Legal status	Luxembourg UCITS
Management Fee	0,50%
Custodian	Crédit Suisse Lux
Liquidity	Daily
Settlement Date	Trade Date + 2 Days

Asset Allocation

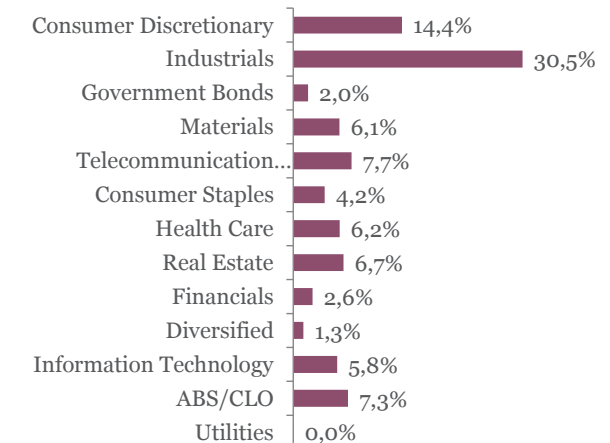


Top 10 bond holdings

	YTM	Rating	Weight
ALTICE FRANCE : SFRFP 5 7/8 02/01/27	5,5%	B+	2,7%
INGENICO GROUP : INGFP 1 5/8 09/13/24	1,9%	NR	2,6%
ILIAD : ILDFP 1 1/2 10/14/24	2,0%	NR	2,5%
EUROFINS SCIEN : ERFFP 2 1/4 01/27/22	1,4%	NR	2,0%
JUBIL 2014-11X DR : JUBIL 2014-11X DR	1,6%	BBB	2,0%
PRYSMIAN SPA : PRYIM 2 1/2 04/11/22	1,8%	NR	2,0%
GLENCORE FINANCE : GLENLN 1 7/8 09/13/24	1,5%	BBB+	2,0%
BOLLORE SA : BOLFP 2 01/25/22	1,7%	NR	2,0%
SIXT SE : SIXT 1 1/2 02/21/24	1,4%	NR	2,0%
BUREAU VERITAS : BVIFP 1 1/4 09/07/23	1,2%	NR	2,0%

¹Cash & Cash Equivalents

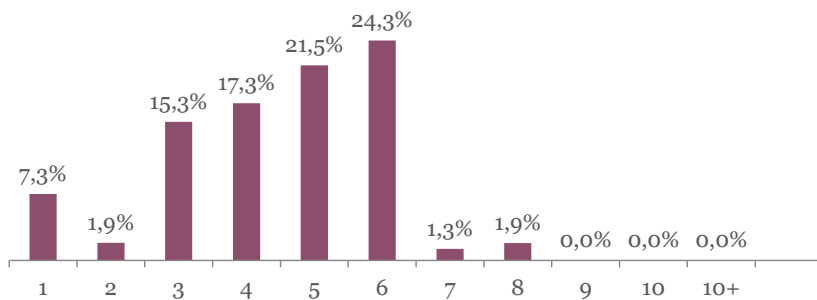
Sector breakdown



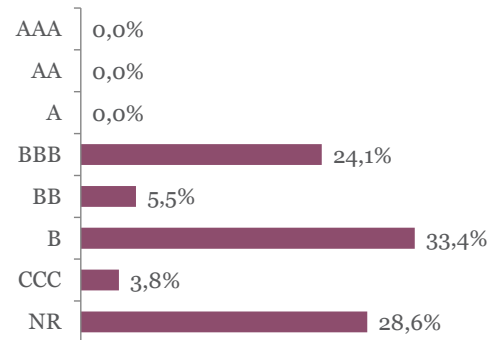
MIDAS - Bond Opportunities I - Acc

Monthly summary report | as at 31 July 2018

Duration breakdown



Rating breakdown



Top funds holdings

MM Convertible Europe Convertible Bonds 1,3%

Market Review

US and EU stroke an agreement on trade on the 25th of July, sending US President back to the White House trumpeting himself “deal maker of the year” and protector of free and fair trade. Yet, tensions around global trade disputes were already vanishing before Mr Juncker’s visit to Washington, as financial markets attention was mesmerized by earnings releases depicting a solid state of affair for both US and EU companies. Resurgence of investor’s risk appetite led to a strong rebound in risky assets. High Yield credit recovered its year-to-date losses, while Equity markets, especially in the US, rose strongly. This shift towards a more risk-on environment is also illustrated by gold, that continues to lose ground. The global picture continues to be supportive both at the micro and the macro level. In that context, the 10 Year US Treasury yield ended July 10bp higher at 2.96%, while the 10 Year German Bund yield increased by 14 bp to end the month at 0.44%. On the credit side, the iTraxx indices (CDS portfolios) tightened by 13bp to 61bp on the European Main index and by 39bp to 283bp on the Cross-Over index.

Portfolio Performance

During the month, the fund gained 1.16%. The overperformance came from the High Yield bonds exposure supported by the tightening of the credit spreads. The contribution of the most secured part of the portfolio, namely the Investment Grade category, was modest (performance of 0.26% for the High-Grade benchmark). We maintained the duration at a level close to 4.2 in order to keep our hedge against a increase of the core sovereign bonds’ yields.

Market Outlook

Alleviating fears and reality checks validate our positive, yet controlled, stance towards risky assets. We expect the momentum, reinvigorated by a good earnings season, to last for a while, and accordingly maintain a favourable positioning towards risky assets.

This newsletter does not constitute an offer to sell or the solicitation of an offer to purchase any security or investment product. Information herein is believed to be reliable but Midas Wealth Management does not warrant its completeness or accuracy. The opinions expressed within are entirely those of Midas Wealth Management and do not constitute an offer of investment advice. Past performance will not necessarily be repeated and is not indicative of future results. The investments discussed may fluctuate in price or value and you may not get back the amount invested. The indices shown are presented only to allow for comparison of the Midas Wealth Management funds’ performance to that of certain widely recognised indices. The volatility of the indices may be materially different from the individual performance attained by a specific fund or investor. In addition, the Midas Wealth Management fund holdings may differ significantly from the securities that comprise the indices shown. Investors cannot invest directly in an index. Performance figures reflect the reinvestment of all dividends and earnings, as well as investment management, administration and performance fees. A description of the specific fee structure and risks of investing for each Midas Wealth Management fund is contained in the fund’s prospectus. No part of this document may be reproduced in any manner without the prior written permission of Midas Wealth Management.