

MIDAS - Bond Opportunities I - Acc

Monthly summary report | as at 30 September 2019



Investment Objective

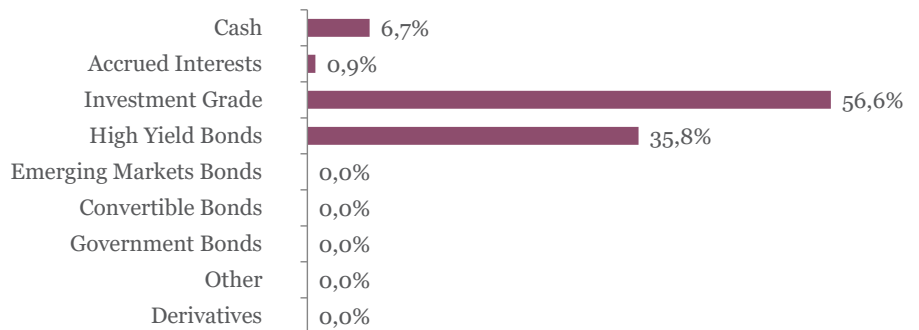
The fund seeks to achieve capital appreciation over the medium term by investing in a diversified portfolio of Euro-denominated fixed income securities (investment-grade corporate bonds, government bonds, high yield and emerging market debt as well as convertible bonds). The main focus is put on bottom-up selection. Interest rate as well as credit risks are managed actively.

Latest Update		Performance	1M	3M	YTD	1Y	2018	2017	SI
NAV per share	106,85	Bond Opportunities I	-0,21%	1,65%	6,16%	1,99%	-4,62%	5,07%	6,85%
2019 year-to-date return as at end of September 2019	6,16%								

Fund key facts

Inception date	31 August 2016
ISIN code	LU1452411033
Asset class	Bonds in EUR
Total fund assets	€ 91 million
Base currency	EUR
Legal status	Luxembourg UCITS
Management Fee	0,53%
Custodian	Crédit Suisse Lux
Liquidity	Daily
Settlement Date	Trade Date + 2 Days

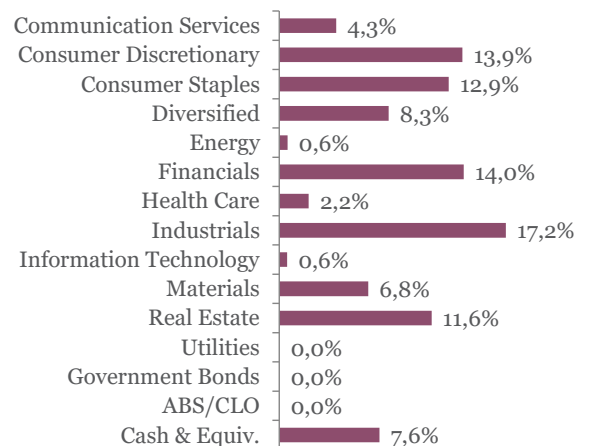
Asset Allocation



Top 10 bond holdings

	YTM	Rating	Weight
ALIMEN COUCHE : ATDBCN 1 7/8 05/06/2	0,5%	BBB	2,4%
WELLS FARGO CO : WFC 1 3/8 10/26/26	0,3%	A-	2,4%
BNP PARIBAS : BNP 1 1/2 11/17/25	0,3%	BBB+	2,4%
ACCOR : ACFP 1 3/4 02/04/26	0,8%	BBB-	2,3%
UNIBAIL-RODAMCO : ULFP 1 02/27/27	0,4%	A	2,3%
SEB SA : SKFP 1 1/2 05/31/24	0,6%	NR	2,3%
BUREAU VERITAS : BVIFP 1 1/4 09/07/23	0,3%	NR	2,3%
BPCE : BPCEGP 0 7/8 01/31/24	0,2%	BBB	2,3%
SIXT SE : SIXT 1 1/2 02/21/24	0,7%	NR	2,3%
G4S INTL FIN PLC : GFSLN 1 1/2 01/09/23	0,6%	BBB-	2,3%

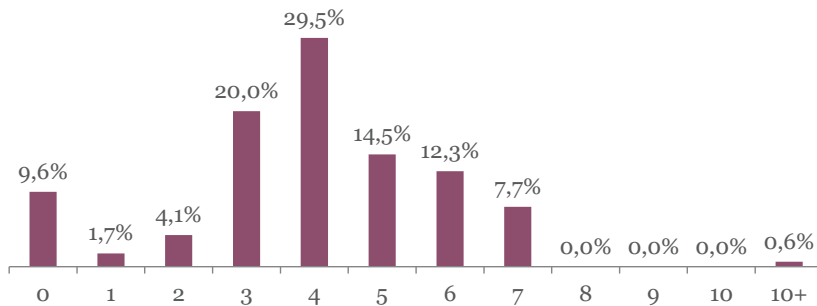
Sector breakdown



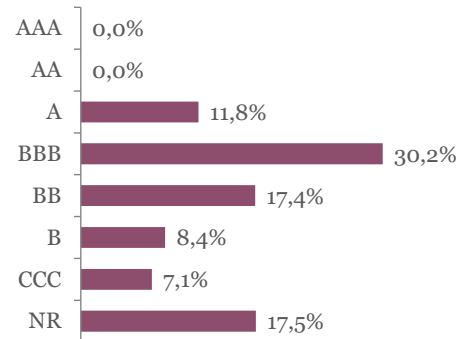
MIDAS - Bond Opportunities I - Acc

Monthly summary report | as at 30 September 2019

Duration breakdown



Rating breakdown



Top funds holdings

ISHARES EURO HY	High Yield Bonds	8,3%
-----------------	------------------	------

Market Review

Despite new central banks' measures and weaker economic data, Global bond yields inched upward in September. Indeed, both the Fed and the ECB cut rates to counter economic slowdown, with the second even restarting bond purchases. The German government 10Y yield increased by 13 bps to -0,57% and the curve flattened. The US government 10Y yield moved similarly (+17 bps to 1,66%) while the curve shifted in the opposite direction. Eurozone peripheral bonds benefited from the ECB's latest actions. Spanish and Italian government spreads tightened 9 bps and 31 bps respectively.

Investment grade corporate bonds declined 0,76% due to both yield effect and spread widening (+5 bps). Non-financial bonds underperformed financial ones, while subordinated debts outperformed senior ones.

High yield bonds were more resilient (-0,12%) as carry partially offset spread widening (+18 bps). Single-B bonds underperformed BB.

Portfolio Performance

The fund lost 0.21% in August. Investment grade bonds contributed negatively with long-dated names declining the most. High yield bonds performed positively thanks to a good bond selection. The outperformance of few issues, namely Promontoria, Atalian, Casino, Diamond and Sarens more than offset the underperformance of Norican, Almaviva, Loxam and Paprec.

Market Outlook

We maintained a balanced approach with a mix of IG and HY corporate bonds, with a slight bias towards HY ones. We took profits on Italian government and Lafarge Holcim hybrid bonds and we sold CMA CGM 2025 bond due to a credit profile which deteriorated. Conversely, we initiated a position on Total 2039 to get exposure on an attractive long-dated issue. We also managed the fund's duration actively to exploit the German 10Y yield's volatility.

This newsletter does not constitute an offer to sell or the solicitation of an offer to purchase any security or investment product. Information herein is believed to be reliable but Midas Wealth Management does not warrant its completeness or accuracy. The opinions expressed within are entirely those of Midas Wealth Management and do not constitute an offer of investment advice. Past performance will not necessarily be repeated and is not indicative of future results. The investments discussed may fluctuate in price or value and you may not get back the amount invested. The indices shown are presented only to allow for comparison of the Midas Wealth Management funds' performance to that of certain widely recognised indices. The volatility of the indices may be materially different from the individual performance attained by a specific fund or investor. In addition, the Midas Wealth Management fund holdings may differ significantly from the securities that comprise the indices shown. Investors cannot invest directly in an index. Performance figures reflect the reinvestment of all dividends and earnings, as well as investment management, administration and performance fees. A description of the specific fee structure and risks of investing for each Midas Wealth Management fund is contained in the fund's prospectus. No part of this document may be reproduced in any manner without the prior written permission of Midas Wealth Management.