

# MWM SICAV - Bond Opportunities A - Acc

Monthly summary report | as at 31 May 2020

## Investment Objective

The fund seeks to achieve capital appreciation over the medium term by investing in a diversified portfolio of fixed income securities (investment-grade corporate bonds, government bonds, high yield and emerging market debt as well as convertible bonds). The main focus is put on bottom-up selection. Interest rate as well as credit risks are managed actively.

## Latest Update

NAV per share	107,50
2020 year-to-date return as at end of May 2020	-6,69%

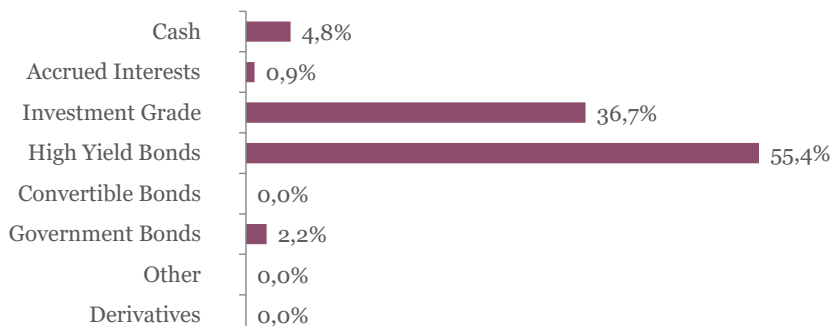
## Performance

	1M	3M	YTD	2019	2018	2017	5Y
Bond Opportunities A	2,03%	-5,81%	-6,69%	6,82%	-5,13%	4,63%	-0,89%

## Fund key facts

Inception date	25 November 2013
ISIN code	LU0927887504
Asset class	Bonds in EUR
Total fund assets	€ 97 million
Base currency	EUR
Legal status	Luxembourg UCITS
Management Fee	1,03%
Custodian	Crédit Suisse Lux
Liquidity	Daily
Settlement Date	Trade Date + 2 Days

## Asset Allocation



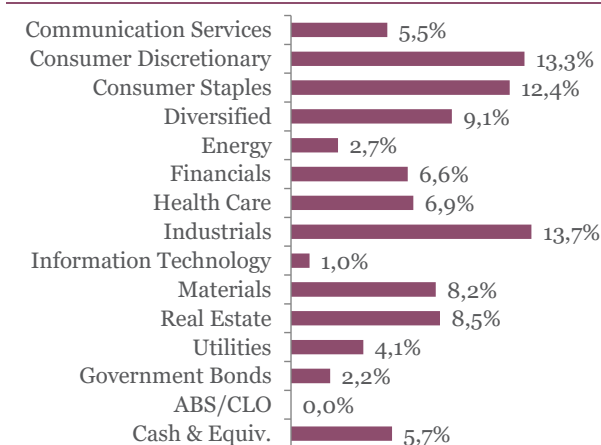
## Currency breakdown

	EUR	USD	JPY
Exposure	88,5%	11,5%	0,0%

## Top 10 bond holdings

	YTM	Rating	Weight
ALTICE FRANCE : SFRFP 6 02/15/28	6,4%	CCC+	2,7%
BANQ FED CRD MUT : BFCM 1 5/8 11/15/2	1,7%	BBB+	2,6%
ISS GLOBAL A/S : ISSDC 1 1/2 08/31/27	2,3%	BBB	2,4%
ELEC DE FRANCE : EDF 3 PERP	3,6%	BB	2,4%
WHIRLPOOL EMEA : WHR 0 1/2 02/20/28	2,0%	BBB	2,3%
BTPS : BTPS 2 1/2 11/15/25	1,0%	BBB	2,2%
GRAND CITY PROP : GYCGR 1 1/2 02/22/2	1,3%	BBB+	2,1%
SYNLAB BONDCO : LABFP Float 07/01/25	4,5%	B	2,1%
BURGER KING FR S : BGRKNG 6 05/01/24	6,1%	B-	2,0%
SIGMA HOLDCO : SIGHCO 5 3/4 05/15/26	5,9%	B-	2,0%

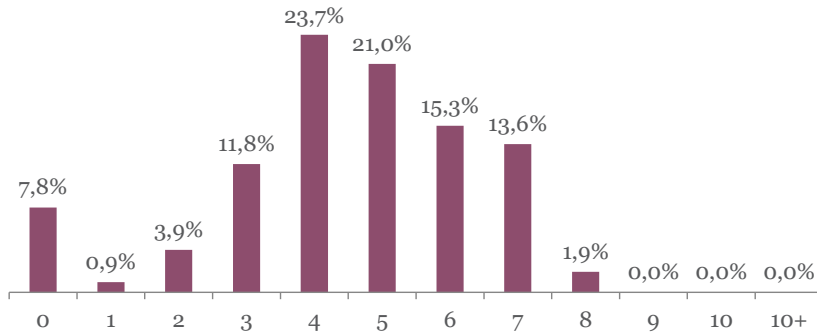
## Sector breakdown



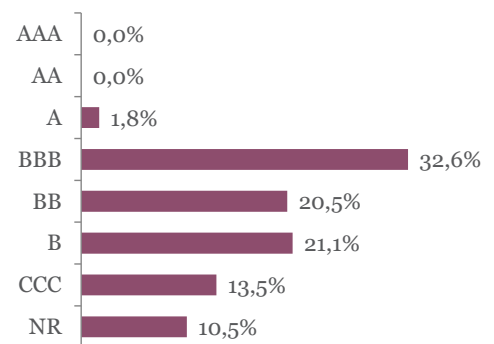
# MWM SICAV - Bond Opportunities A - Acc

Monthly summary report | as at 31 May 2020

## Duration breakdown



## Rating breakdown



## Top funds holdings

ISHARES EURO HY	High Yield Bonds	9,1%
-----------------	------------------	------

## Market Review

Fixed income markets continued to advance in May. The move was driven by improvement of the coronavirus situation and lockdown easing. Governments and central banks also provided additional support to counter the economic crisis. In this context, the German Bund yield receded (+14 bps to -0.45%). Inversely, peripheral spreads tightened strongly (Spain -30 bps, Italy -43 bps, Greece -78 bps). In the wake of the equity rally, corporate bonds performed well. IG corporate bonds increased by 0.17%. Spread tightened (-10 bps) despite record issuance, which more than offset the negative yield effect. High yield bonds performed even further (+2,77%) as spreads rallied (-79 bps). Single-B and hybrid bonds outperformed the other segments.

## Portfolio Performance

The fund gained 2.03% in May, as corporate bonds posted strong returns. Single-B (incl. Diversey, Loxam, Altice, Sotheby's, IHS, Almayiva) and hybrid bonds (incl. EDF, Aroundtown, Eurofins) performed well. By contrast, government bonds (US, Germany), some of the most impacted names (WFS, Sixt) and the USD performed negatively.

## Market Outlook

While markets have rebounded significantly for the second month in a row, opportunities are still present. Credit spreads have retraced by only 50% and should continue to do while the coronavirus situation improves.

Consequently, we increased high yield bonds (incl. Dometic, Diversey, Burger King France, Paprec, Picard) and hybrid bonds (EDF, Santander, ING, Accor) slightly. We also participated in new issue (Synlab, Ferrari). On the contrary, we reduced fragile names (incl. WFS, Walnut, Vivion). We also sold core government bonds (Germany, US), IG bonds (US-names mostly) and reduced FX exposure (USD, JPY).

This newsletter does not constitute an offer to sell or the solicitation of an offer to purchase any security or investment product. Information herein is believed to be reliable but Midas Wealth Management does not warrant its completeness or accuracy. The opinions expressed within are entirely those of Midas Wealth Management and do not constitute an offer of investment advice. Past performance will not necessarily be repeated and is not indicative of future results. The investments discussed may fluctuate in price or value and you may not get back the amount invested. The indices shown are presented only to allow for comparison of the Midas Wealth Management funds' performance to that of certain widely recognised indices. The volatility of the indices may be materially different from the individual performance attained by a specific fund or investor. In addition, the Midas Wealth Management fund holdings may differ significantly from the securities that comprise the indices shown. Investors cannot invest directly in an index. Performance figures reflect the reinvestment of all dividends and earnings, as well as investment management, administration and performance fees. A description of the specific fee structure and risks of investing for each Midas Wealth Management fund is contained in the fund's prospectus. No part of this document may be reproduced in any manner without the prior written permission of Midas Wealth Management.

\* Performance has been calculated since inception on the 25th of November 2013 of Expert Investor Sicav Midas Bond Opportunities Fund which merged into Midas Sicav Bond Opportunities Fund on the 1st of August 2016.