

MWM SICAV - Bond Opportunities A - Acc

Monthly summary report | as at 30 November 2020



Investment Objective

The fund seeks to achieve capital appreciation over the medium term by investing in a diversified portfolio of fixed income securities (investment-grade corporate bonds, government bonds, high yield and emerging market debt as well as convertible bonds). The main focus is put on bottom-up selection. Interest rate as well as credit risks are managed actively.

Latest Update

NAV per share	114,90
2020 year-to-date return as at end of November 2020	-0,27%

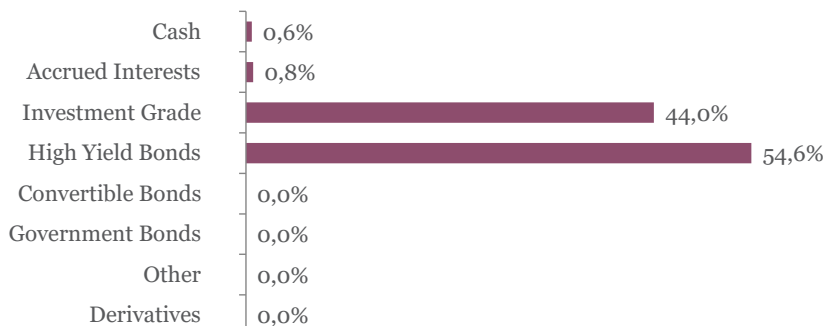
Performance

	1M	3M	YTD	2019	2018	2017	5Y
Bond Opportunities A	2,75%	3,27%	-0,27%	6,82%	-5,13%	4,63%	8,13%

Fund key facts

Inception date	25 November 2013
ISIN code	LU0927887504
Asset class	Bonds in EUR
Total fund assets	€ 107 million
Base currency	EUR
Legal status	Luxembourg UCITS
Management Fee	1,03%
Custodian	Crédit Suisse Lux
Liquidity	Daily
Settlement Date	Trade Date + 2 Days

Asset Allocation



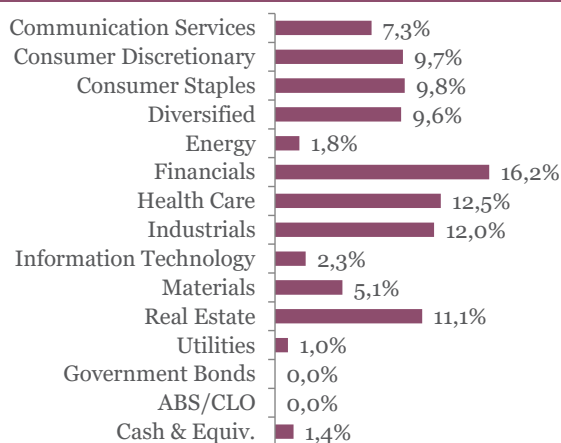
Currency breakdown

	EUR	USD	JPY
Exposure	88,2%	6,9%	4,9%

Top 10 bond holdings

	YTM	Rating	Weight
BANQ FED CRD MUT : BFCM 1 5/8 11/15/2	0,5%	BBB+	2,5%
SEB SA : SKFP 1 3/8 06/16/25	0,6%	NR	2,4%
ISS GLOBAL A/S : ISSDC 1 1/2 08/31/27	1,3%	BBB-	2,4%
GRAND CITY PROP : GYCGR 1 1/2 02/22/2	0,3%	BBB+	2,0%
CEETRUS SA : CEETRU 2 3/4 11/26/26	1,5%	BBB-	2,0%
SPIE SA : SPIEFP 2 5/8 06/18/26	1,6%	BB	2,0%
IMCD NV : IMCDNA 2 1/2 03/26/25	1,5%	NR	1,9%
IQVIA INC : IQV 2 7/8 06/15/28	2,0%	BB-	1,9%
MEDTRONIC GLOBAL : MDT 0 3/8 10/15/2	0,1%	A-	1,9%
BNP PARIBAS : BNP 1 11/29/24	0,4%	BBB	1,9%

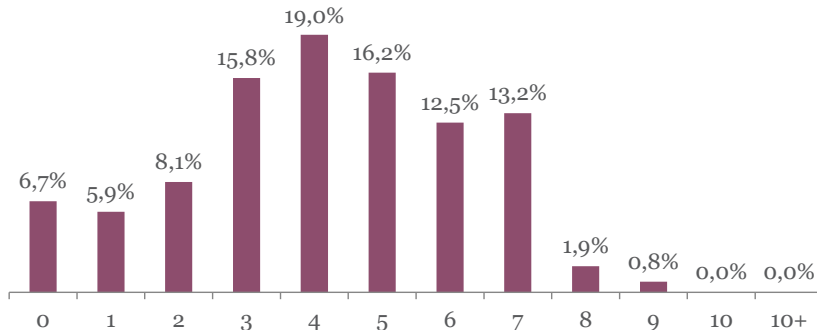
Sector breakdown



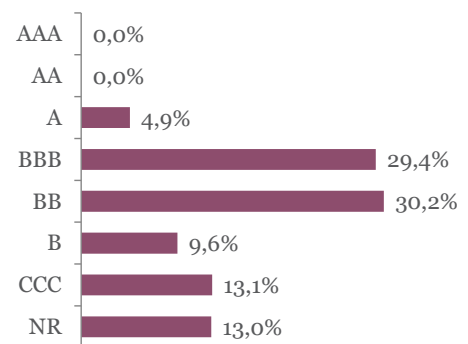
MWM SICAV - Bond Opportunities A - Acc

Monthly summary report | as at 30 November 2020

Duration breakdown



Rating breakdown



Top funds holdings

ISHARES EURO HY	High Yield Bonds	9,6%
-----------------	------------------	------

Market Review

Fixed income markets were in full swing in November by a series of Covid-19 vaccine breakthroughs, optimism over Joe Biden's victory in the US presidential election and good earnings releases. On the one hand, risk-free rates bottomed out as safe haven trades were unwound (German 10Y yield +6 bps to -0.57%). On the other hand, risky assets jumped, propelled by the prospects of sharp economic rebound in 2021. Peripheral spreads tightened massively. For instance, the Italian 10Y spread reached a 2½-year low (-19 bps to 120 bps). Corporate bonds posted strong performance and got back in the black year-to-date. Investment grade gained 0,81% while high yield jumped 4,04%. Spreads tightened by 20 and 125 bps respectively.

Portfolio Performance

The fund gained 2.75% in November. High yield bonds contributed the most while investment grade bonds contributed positively as well. Top performers were Casino, Aroundtown Perp, Loxam, Spie, Santander Perp, Ceetrus, CMA and Altice. Conversely, foreign currencies (both USD and JPY) performed negatively.

During the month, we introduced new issues on both primary (Ubisoft, Unibail) and secondary (Mölnlycke, Medtronic) markets. We also stepped up our Financial AT1 (CoCo's) exposure (Intesa, Santander, UBS, Santander). By contrast, we took profit on the most expensive names (LVMH, Whirlpool, AB-InBev, Redexis, SIG, Rexel).

Market Outlook

Prospects for Covid-19 vaccines distribution by year-end supported the case for an improvement in economic activity next year. In the meantime, governments and central banks have remained supportive to counter surging Covid-19 cases effects. For instance, the ECB is expected to enlarge its quantitative easing program and to extend refinancing operations to banks at its December meeting.

Consequently, we slightly reinforced the fund's high yield exposure including CoCo's that are very attractive considering such perspectives, especially compared to negative-yielding government and best-rated investment grade bonds.

This newsletter does not constitute an offer to sell or the solicitation of an offer to purchase any security or investment product. Information herein is believed to be reliable but Midas Wealth Management does not warrant its completeness or accuracy. The opinions expressed within are entirely those of Midas Wealth Management and do not constitute an offer of investment advice. Past performance will not necessarily be repeated and is not indicative of future results. The investments discussed may fluctuate in price or value and you may not get back the amount invested. The indices shown are presented only to allow for comparison of the Midas Wealth Management funds' performance to that of certain widely recognised indices. The volatility of the indices may be materially different from the individual performance attained by a specific fund or investor. In addition, the Midas Wealth Management fund holdings may differ significantly from the securities that comprise the indices shown. Investors cannot invest directly in an index. Performance figures reflect the reinvestment of all dividends and earnings, as well as investment management, administration and performance fees. A description of the specific fee structure and risks of investing for each Midas Wealth Management fund is contained in the fund's prospectus. No part of this document may be reproduced in any manner without the prior written permission of Midas Wealth Management.

* Performance has been calculated since inception on the 25th of November 2013 of Expert Investor Sicav Midas Bond Opportunities Fund which merged into Midas Sicav Bond Opportunities Fund on the 1st of August 2016.